

Solenoid valve can be connected as a normally open or normally closed valve

Technical data

Thread type:

1/8" NPTF

Operating voltage:

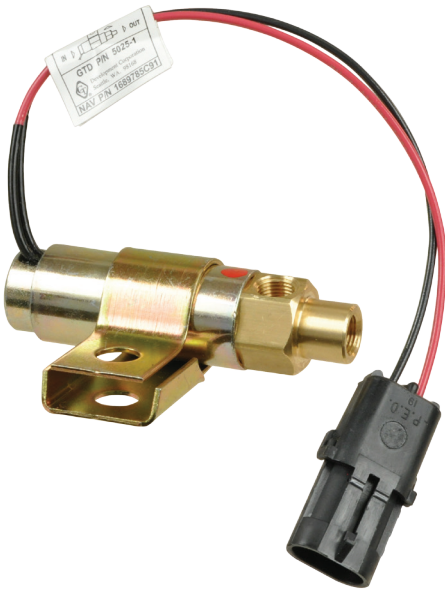
12Vdc with diode

Electrical connection:

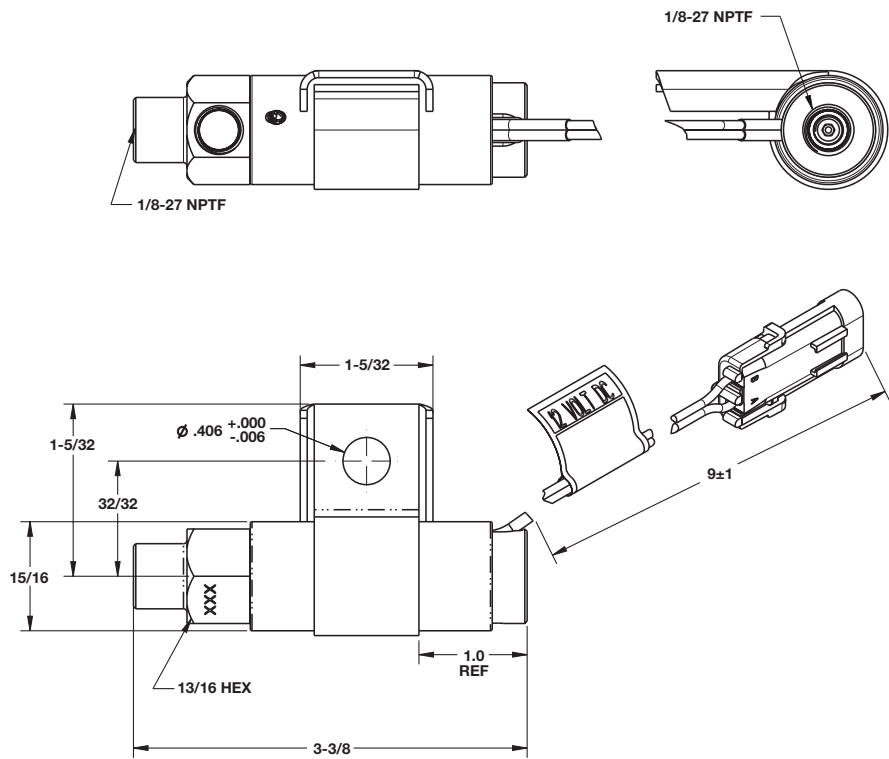
Flying lead with weather pack seal

Material:

Steel body, Brass manifold, FPM seals



Dimensions (Inches)



Models

Model	Port Size	Voltage
5025-1	1/8"-27	12Vdc

Accessories

Commercial Vehicle In-Line Filter	Commercial Vehicle Exhaust Vent Shield
	
5050	5060-1

● In stock
◆ Please call 1.800.710.7823 for availability